



# QSIA CLIENT APPLICATION

## OUTLINE USER GUIDE

### CONFIDENTIAL DOCUMENT

Updated: 22/10/2019 18:18

Prepared by: Neil Hutchins

aQ Broadcast Limited

T: +44 (0) 118 324 0404

+1 508 784 1355

E: [support@aq-broadcast.com](mailto:support@aq-broadcast.com)

W: [www.aq-broadcast.com](http://www.aq-broadcast.com)

# OUTLINE USER GUIDE FOR THE QSIA CLIENT

## CONTENTS

1	Summary .....	3
2	Starting and Running the QSIA Client.....	4
3	Configuring the QSIA Client interface.....	5
3.1	Client Panels .....	5
3.2	Renaming a Panel .....	6
3.3	Adding and Deleting Panels .....	7
3.4	Resizing Panels.....	10
3.5	Maximising and Restoring Panels .....	11
4	Panel Plugins .....	12
5	Panel and Plugin Preferences.....	17
6	Opening a Resource.....	18
6.1	Opening a Calendar-Chain .....	19
6.2	Closing a Calendar-Chain .....	22
7	QSIA Client Settings.....	23
7.1	Auto-Open Settings .....	23

## 1 SUMMARY

This document provides outline / overview information relating to the QSIA Client.

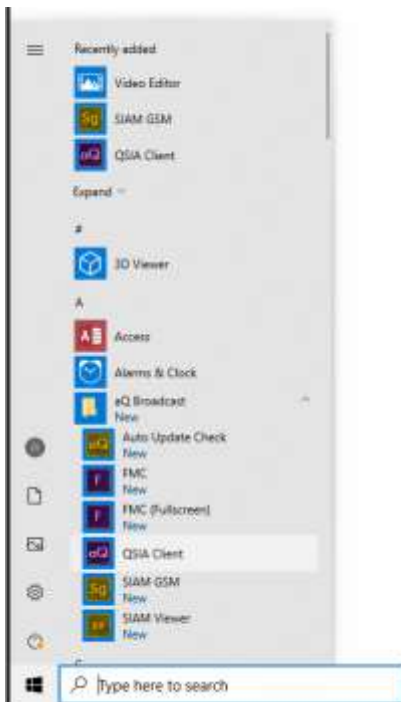
The QSIA Client is one of the user interfaces within the aQ ecosystem, alongside others including the Flexible Media Controller (FMC), the RSMP Administrator and other monitoring and configuration utilities.

The QSIA Client supports a range of activities, particularly related to planning and preparation of schedules and playlists. It is a native Windows application, requiring installation of the appropriate programme files on the local machine, but typically operates in conjunction with one or more remote systems, including other ecosystem elements such as the QSIA database.

The aQ ecosystem is inherently multi-user; meaning that, for instance, many users can work on the same schedule at the same time. A change made by one user in one QSIA Client will be reflected, immediately and automatically, for all others working within the same resource.

## 2 STARTING AND RUNNING THE QSIA CLIENT

The QSIA Client is accessible under the 'aQ Broadcast' folder in the Windows Start menu:



During startup, the QSIA Client should attempt to connect to the central database and will ask for a Username and Password:

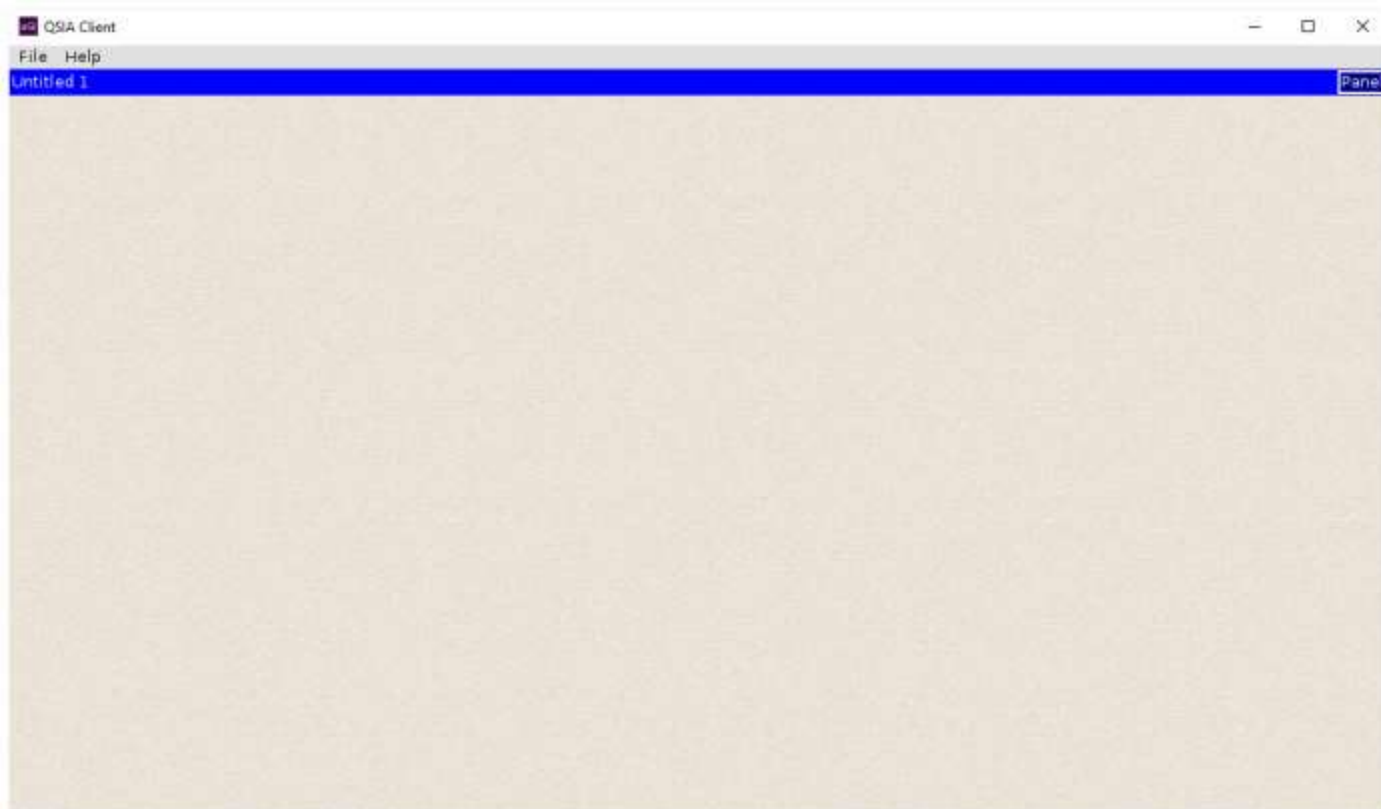


The exact credentials will depend upon the system and user accounts being used.

## 3 CONFIGURING THE QSIA CLIENT INTERFACE

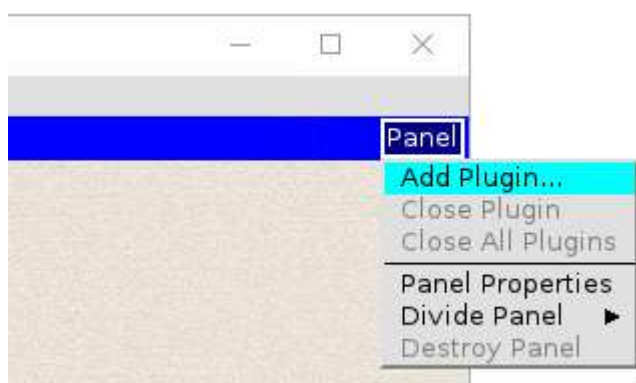
### 3.1 CLIENT PANELS

By default, the QSIA Client opens as a single ‘panel’ which occupies all of the space available within the working area of the application, as illustrated below.



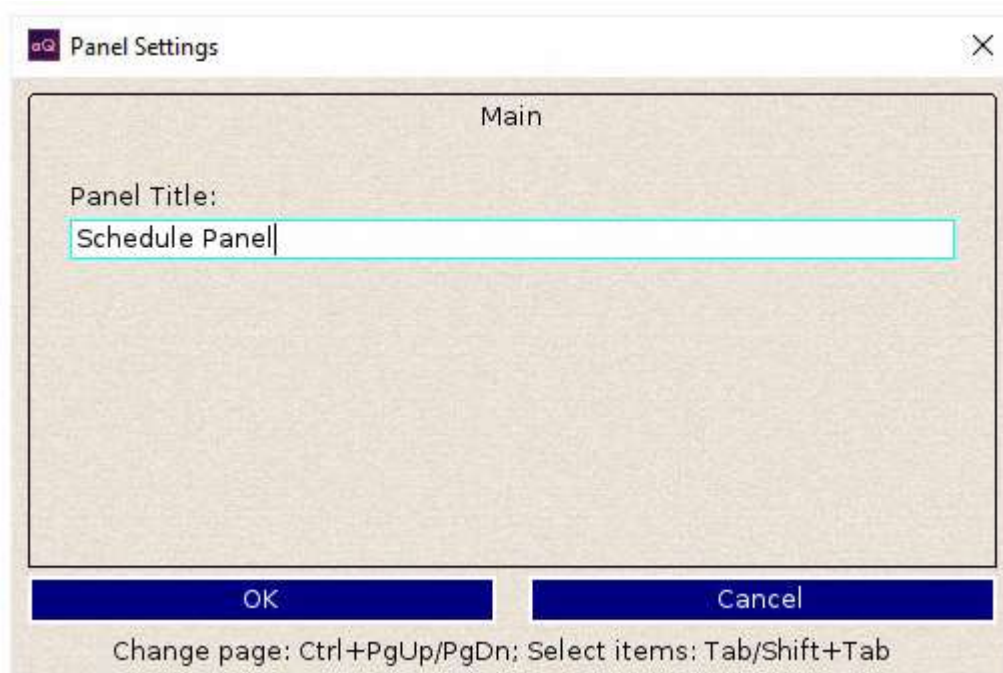
In this case, the current panel is named ‘Untitled 1’. As additional panels are opened, they will be named ‘Untitled 2’, etc. – however the name of any panel can be changed to something more descriptive as/when required.

A ‘Panel’ button at the right-hand side of the title bar provides control over the contents and properties of the current panel, and allows additional panels to be opened.



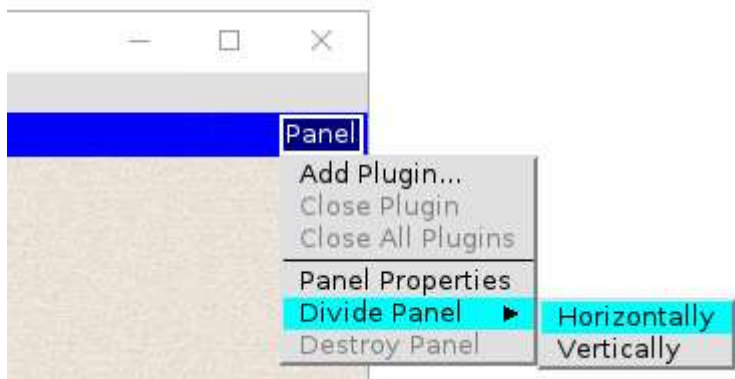
### 3.2 RENAMING A PANEL

Selecting 'Panel Properties' opens a Panel Settings dialogue, which allows the name of the current panel to be changed. In this example, the title has been changed to "Schedule Panel", which updates the displayed name once the 'OK' button has been pressed.

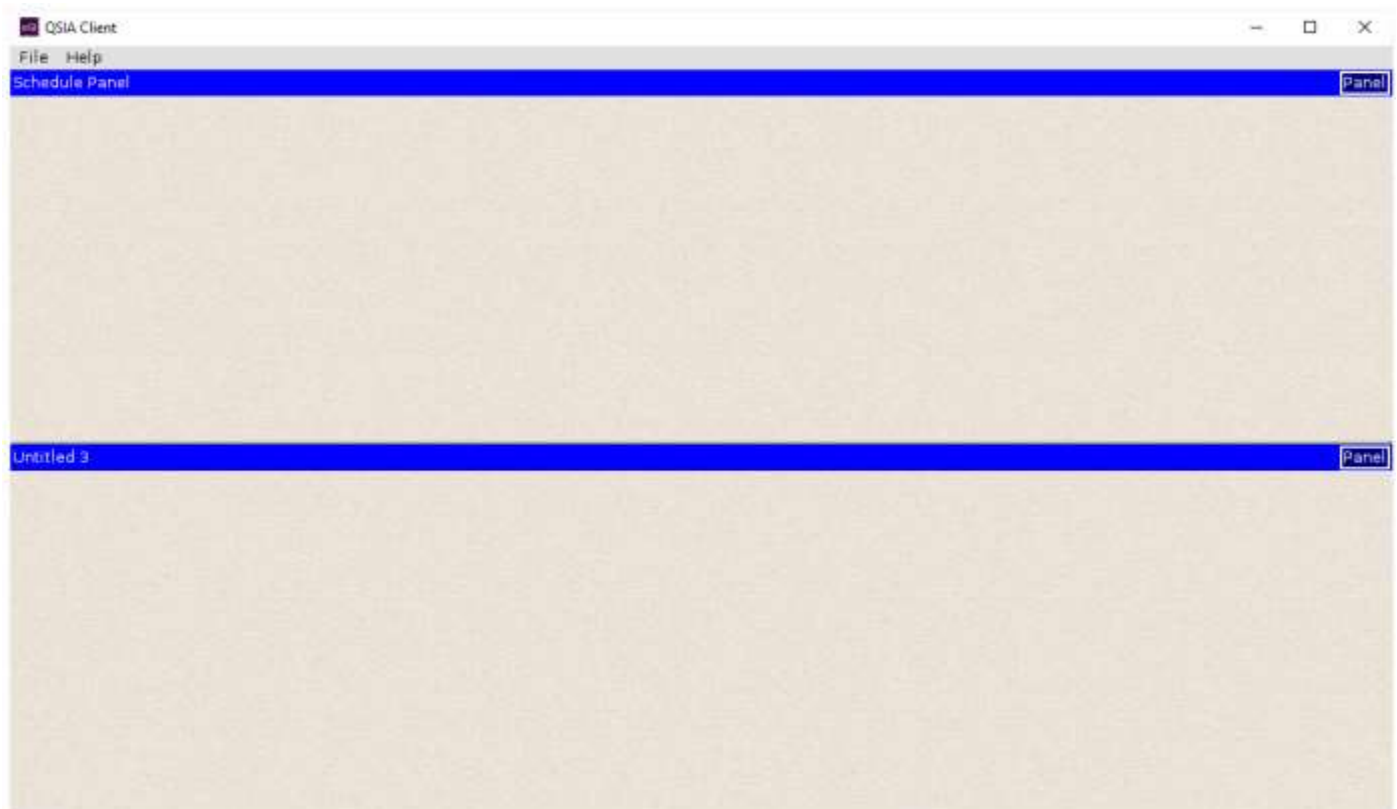


### 3.3 ADDING AND DELETING PANELS

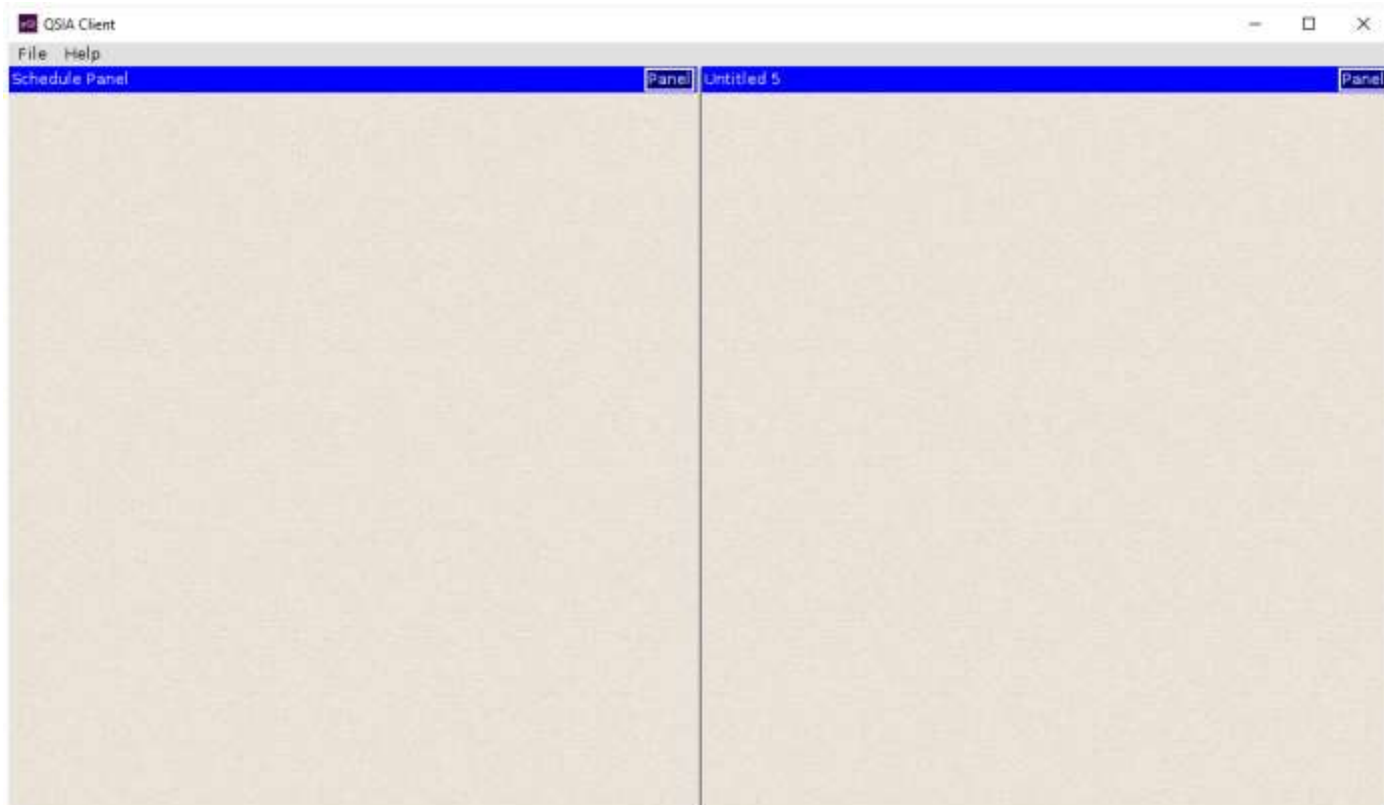
Selecting 'Divide Panel' allows an additional panel, or working area, to be created.



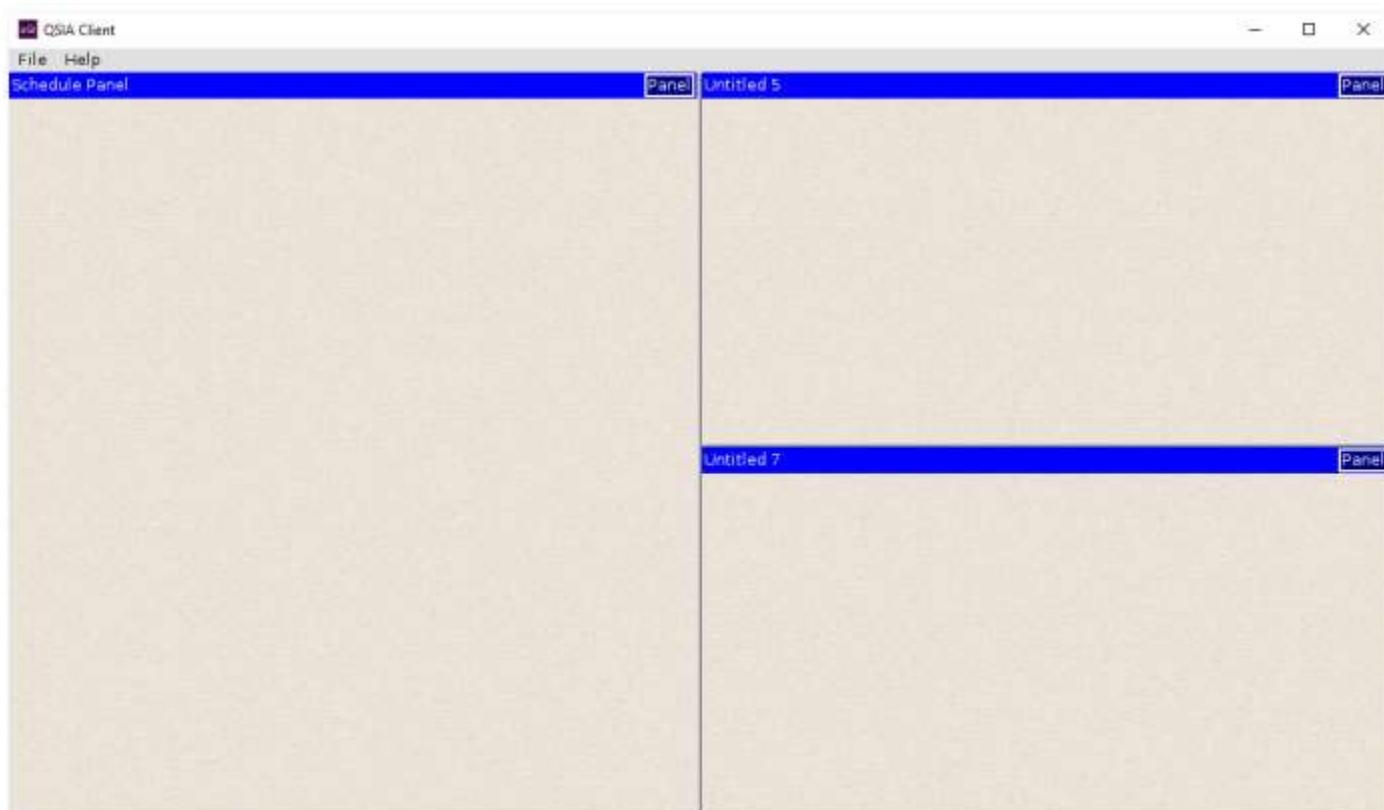
An existing panel can be divided horizontally or vertically. Dividing horizontally will result in one panel on top of another, as below.



Dividing vertically will result in side-by-side panels, as below.

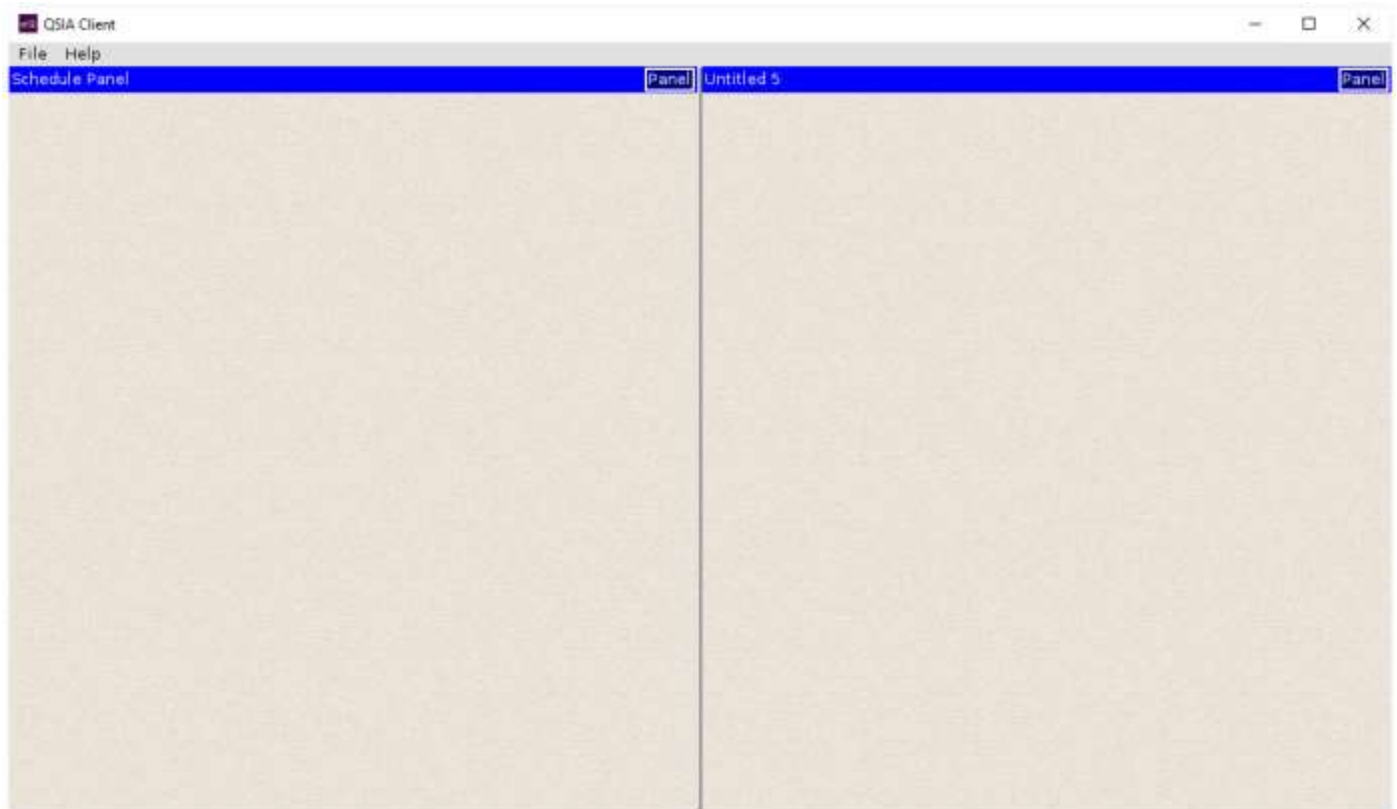


The panel divisions can be mixed – in the example below, a vertical split has been used to create ‘Untitled 5’ and then a horizontal split has been used to create ‘Untitled 7’.



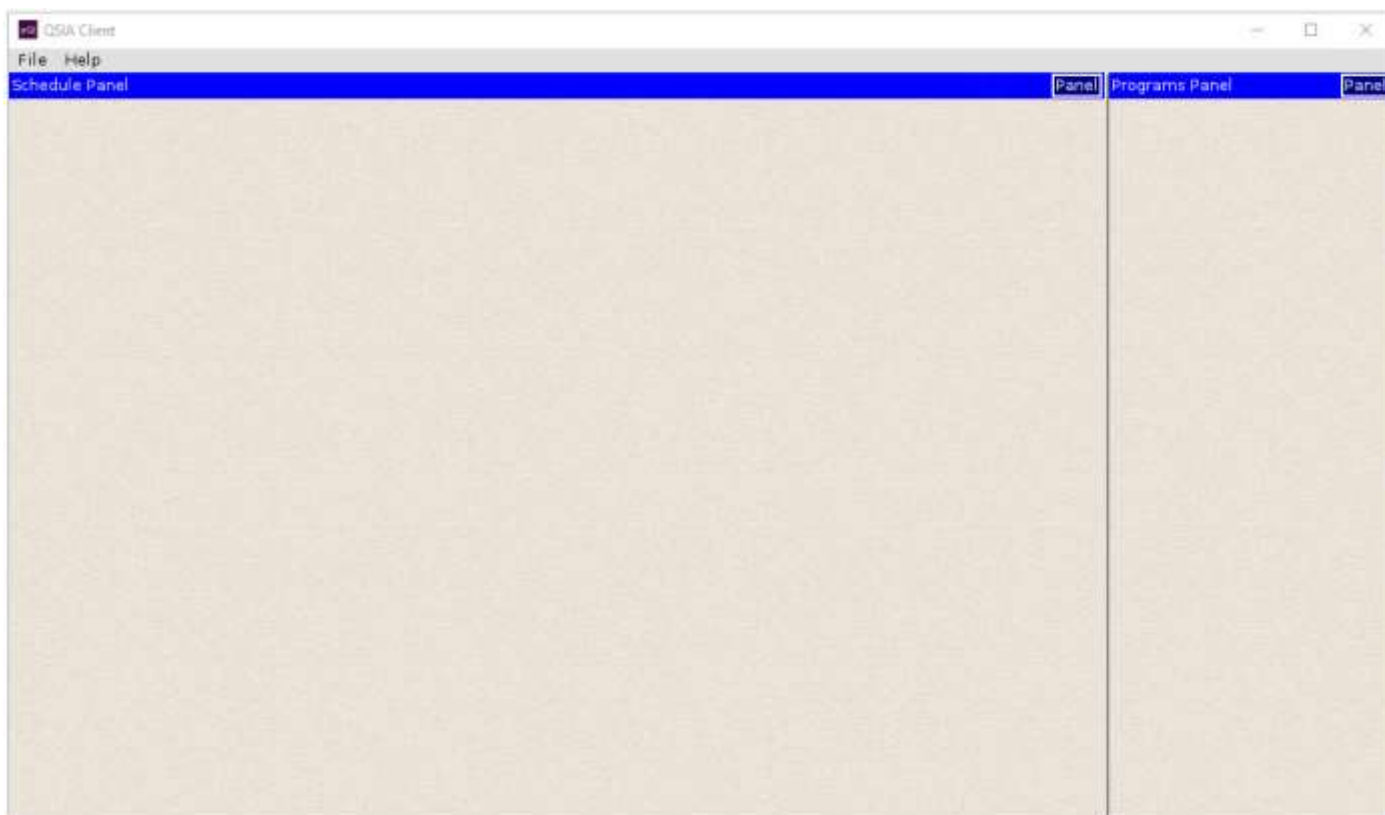
Panels can be removed using the ‘Destroy Panel’ menu option. In this example, ‘Untitled 7’ has been removed to leave two side-by-side panels.





### 3.4 RESIZING PANELS

Once more than one panel has been added, the proportion of the displayed areas can be changed by dragging the border located between them. In the example below, the right-hand side panel has been renamed as 'Programs Panel' and the border has been dragged towards the right to make the 'Schedule Panel' much larger.



### 3.5 MAXIMISING AND RESTORING PANELS

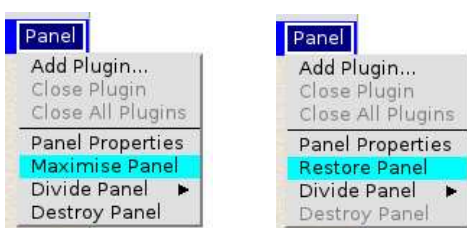
Whilst it is useful to have multiple panels, or working areas, available within the QSIA Client, it is often necessary to focus on one set of information before returning to the overall view. Double-clicking on the (normally blue) header bar of a panel will maximise that panel, so that other panels are temporarily hidden. In this example, double-clicking the header bar of the Schedule Panel makes that panel expand to fill the available space.



Double-clicking the header again will restore the previous view, so that both panels are visible again.

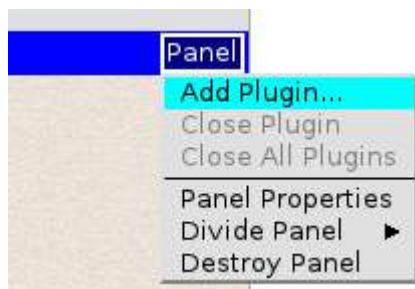


It is also possible to use menu options to maximise and restore the panel sizing, in addition to double-clicking the header bar: from the 'Panel' button, the 'Maximise Panel' and 'Restore Panel' options will provide the same functionality.

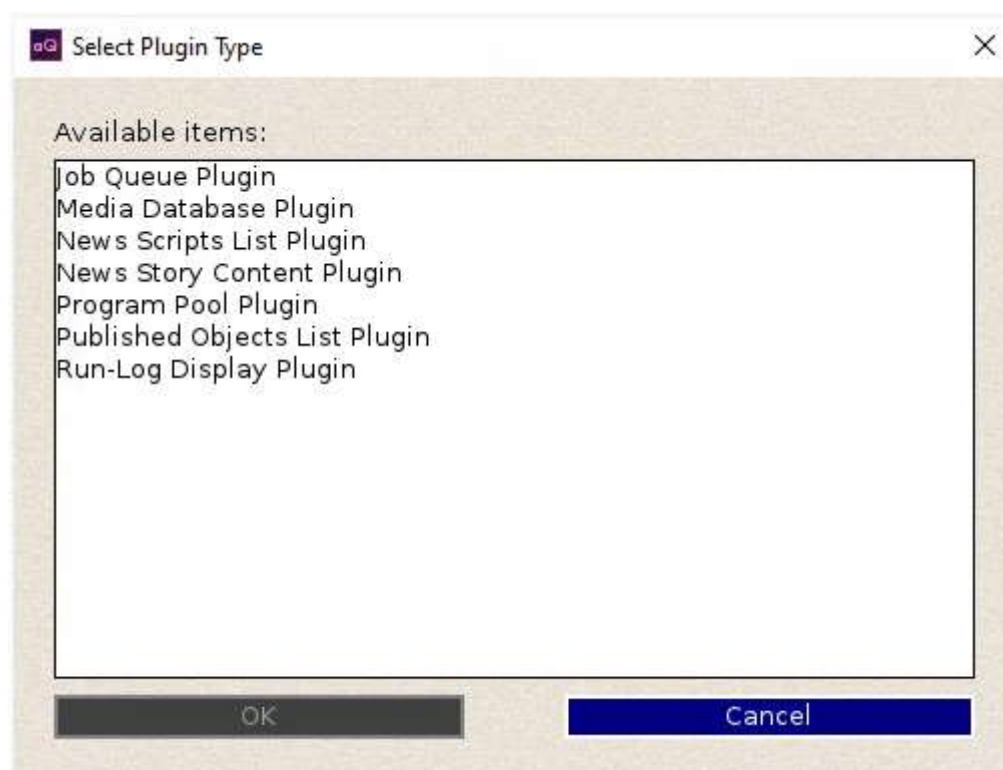


## 4 PANEL PLUGINS

Once panels have been arranged in an appropriate way, their content can be configured to suit current workflow. Different approaches are possible here, but one is to open an appropriate Plugin within a panel.



Selecting the 'Add Plugin...' menu option will offer the option to select the required plugin from the list of available items.

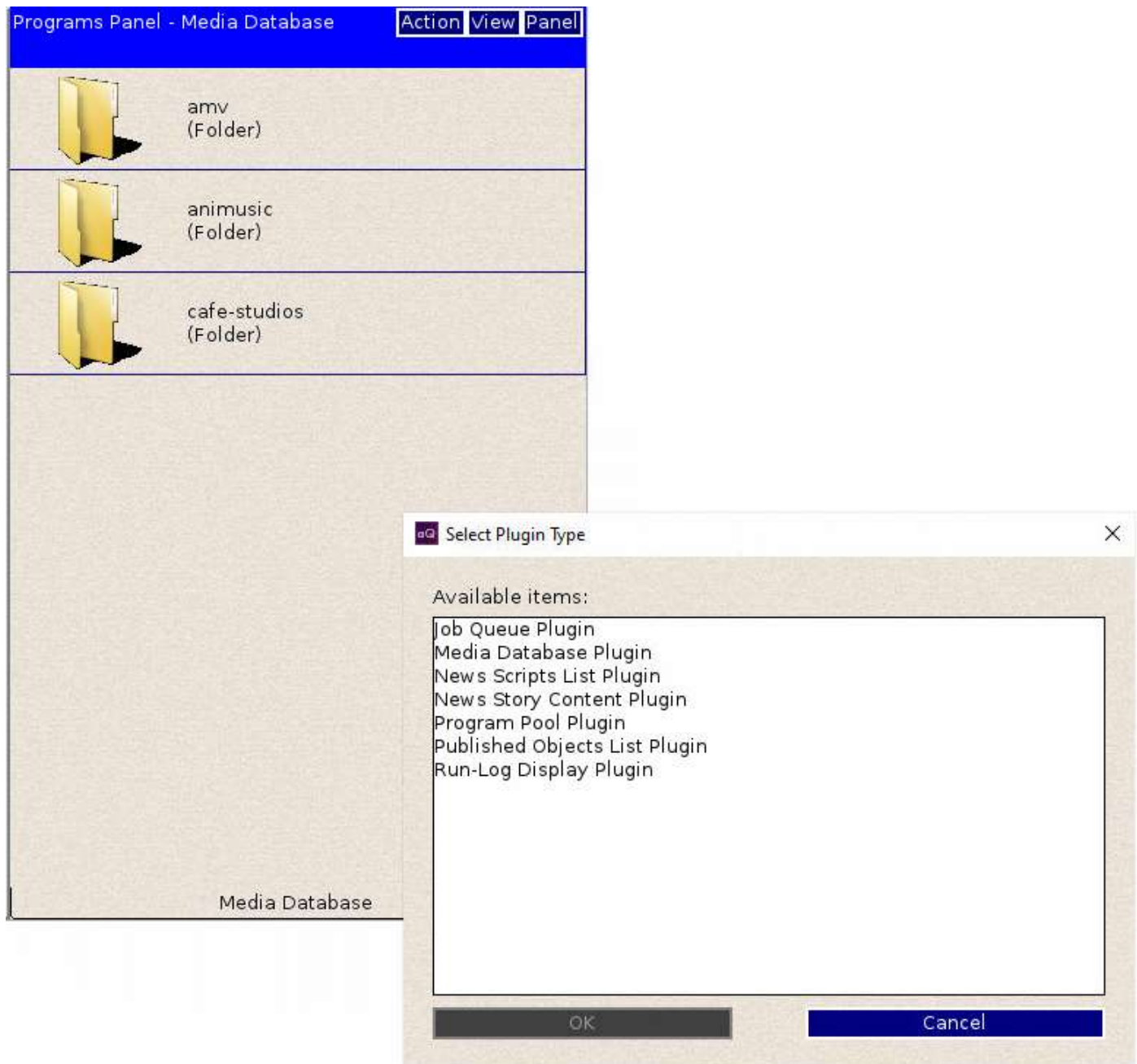


For instance, selecting the 'Media Database Plugin' will display the contents (i.e. loosely the video clips) within the current QSIA Database.

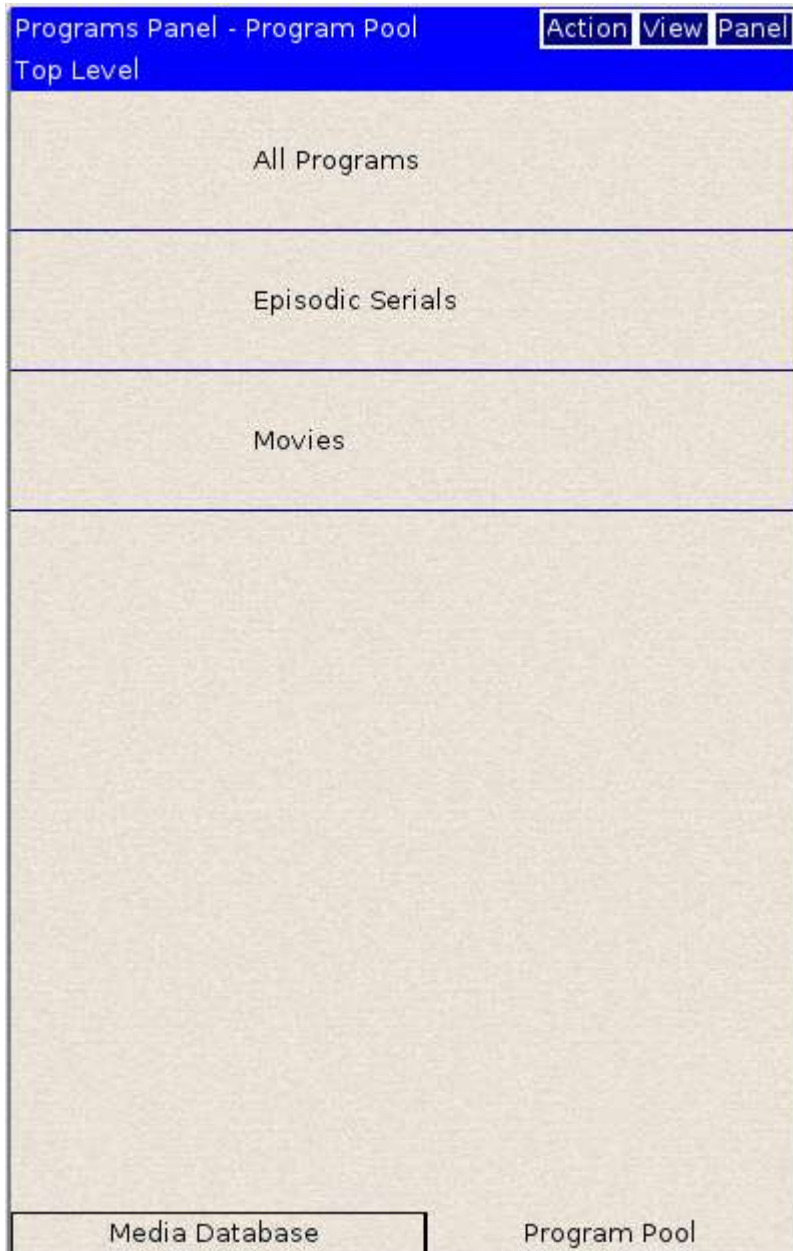


Note that once a plugin has been opened, additional buttons are displayed to the left of the original 'Panel' command. These relate to the specific plugin currently in use – in this case, 'Action' and 'View' relate to specific functions within Media Database.

It is possible to open multiple plugins within a single panel. In the example below, the Program Pool has been opened in addition to the existing Media Database.

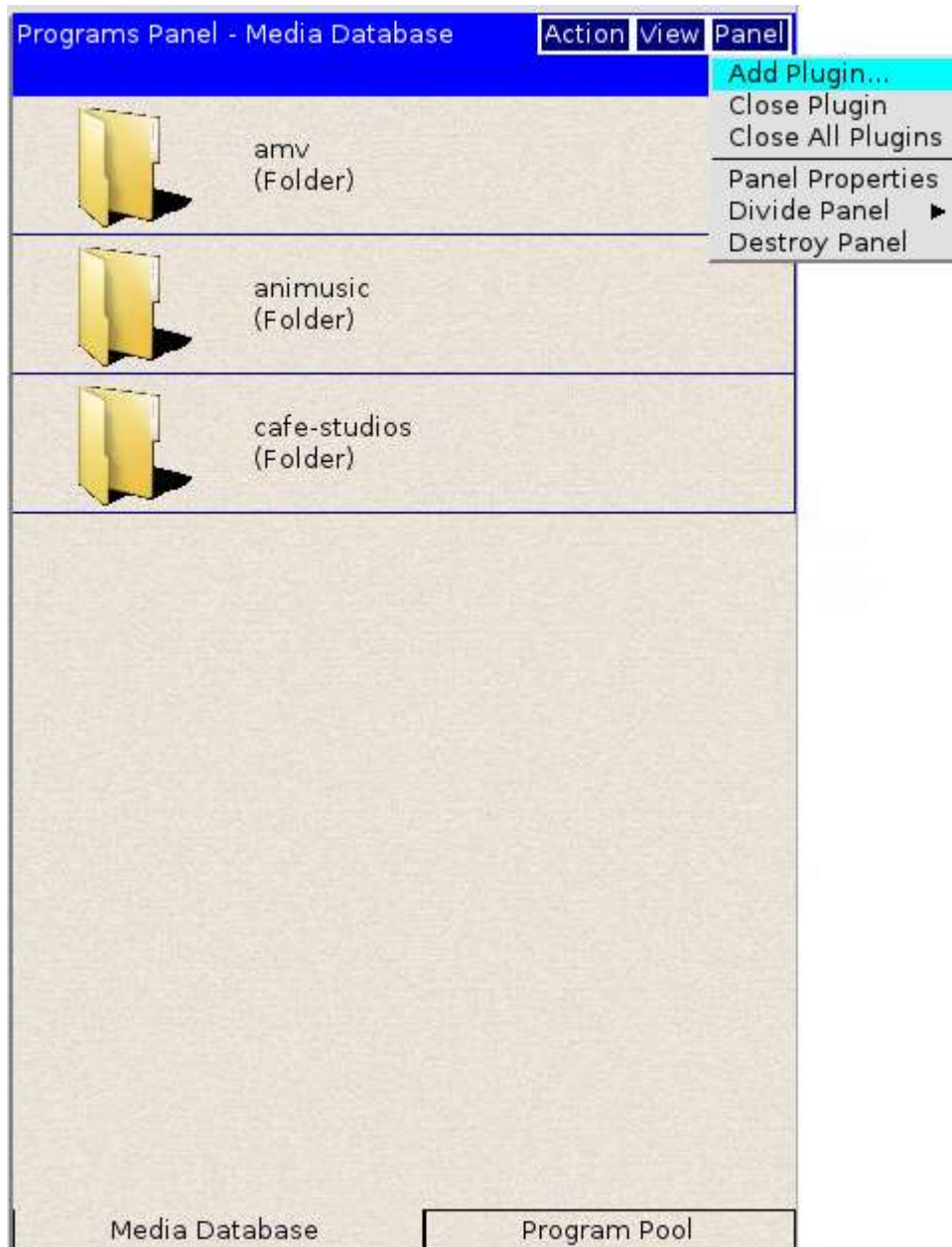


This adds an additional 'tab' to the bottom of the panel, which allows – in this case – the view to be switched quickly between the Media Database and the Program Pool information.





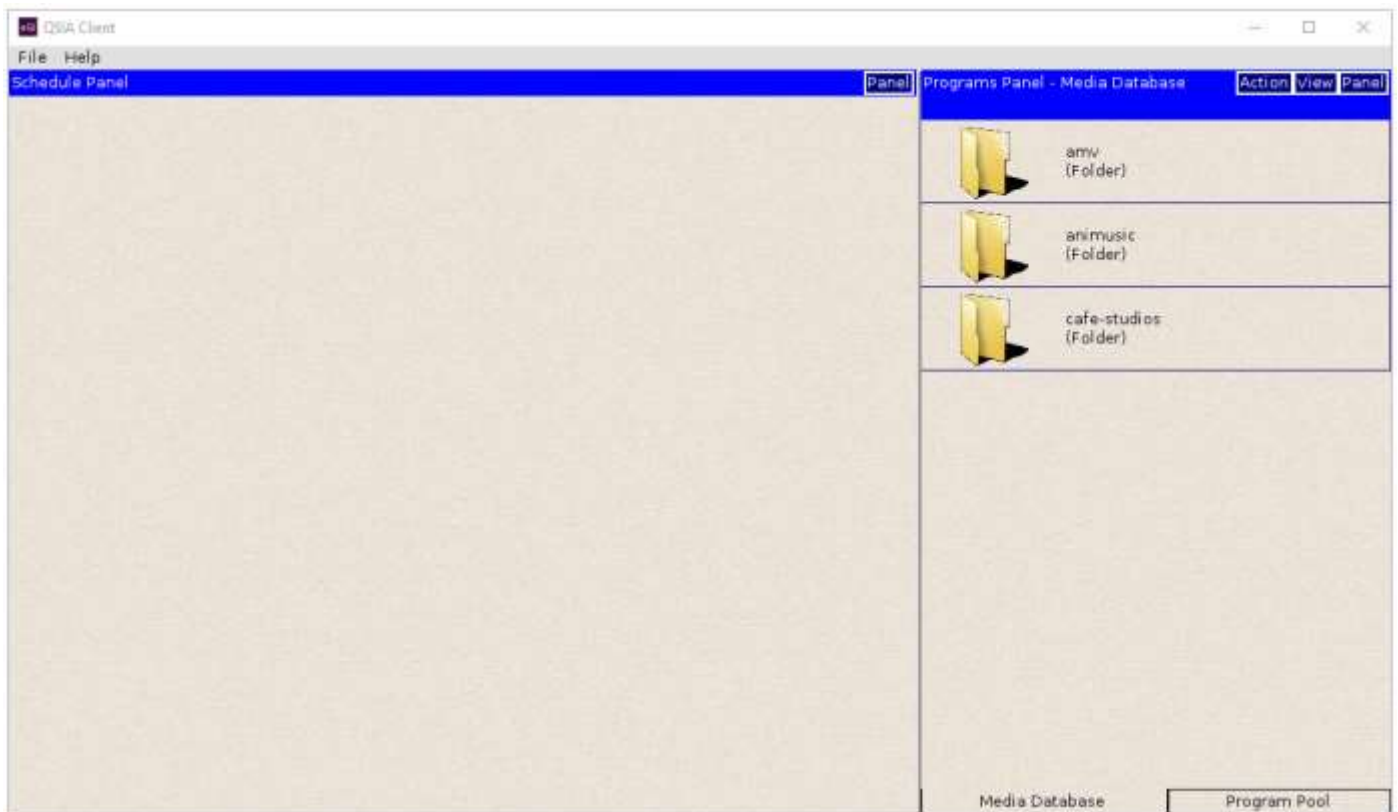
Once one or more plugins are open within a panel, the current plugin, or all plugins, can be closed using menu options (i.e. 'Close Plugin' and 'Close All Plugins' from the Panel button).





## 5 PANEL AND PLUGIN PREFERENCES

Once the panels and plugins have been arranged in an appropriate way, the layout will be retained when the application has been closed and reopened. For example, if the QSIA Client is closed with the arrangement below, it will appear using the same arrangement when started again.



## 6 OPENING A RESOURCE

As described above, a Panel can contain one or more Plugins, which can provide access to different types of information such as media, program and as-run details.

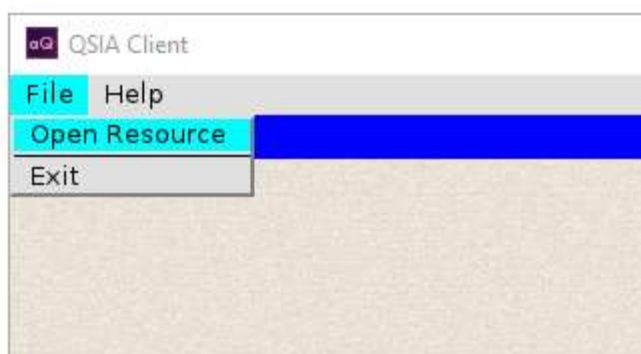
However, a Panel can also display Resources as well as, or instead of, Plugins. A Resource is typically related to a schedule of some form – for instance, a Calendar-Chain, an Event List, a Schedule, a Playlist, a Runorder or a Traffic Database. It doesn't always apply, but a simplistic view of the relationship between the two types of object would be that Plugins can provide elements used within Resources – for instance, by dragging Programs from the Program Pool into a Calendar Chain schedule.

## 6.1 OPENING A CALENDAR-CHAIN

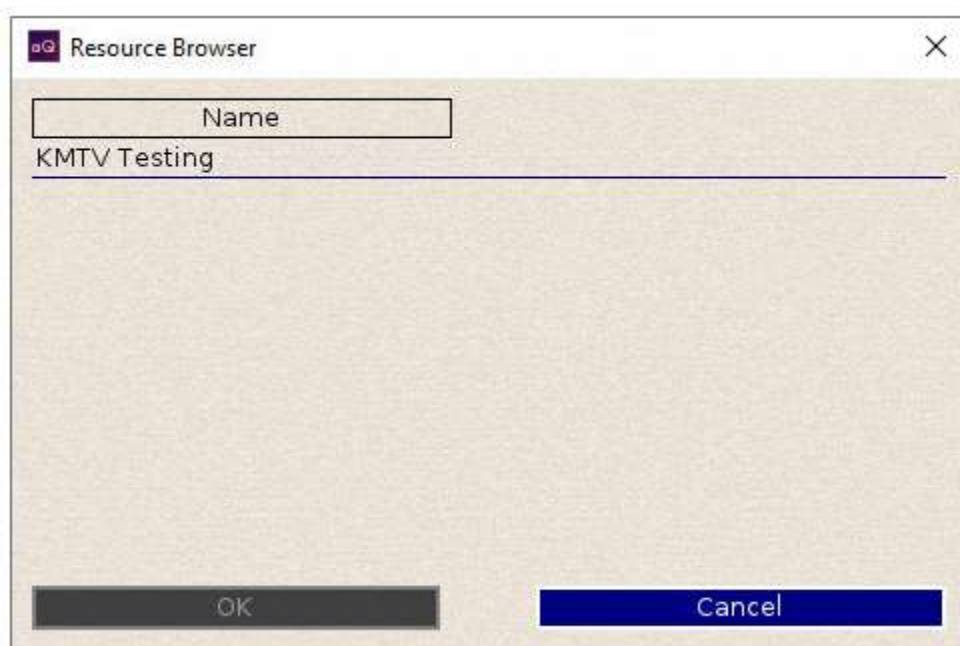
A Calendar-Chain (cal-chain) provides an effective way to build a continuous schedule for 24x7 channel transmission operation. In simple terms, it provides a schedule for each day (starting at an appropriate time, often 06:00), with each day linked into the next to provide a continuous sequence of events.

Whereas a Plugin is opened within a specific Panel, using the 'Panel' button, a cal-chain is opened as a resource from the main menu and is then loaded into the Panel specified by the user.

To open a cal-chain, select 'File' from the main menu and then 'Open Resource', as shown below:



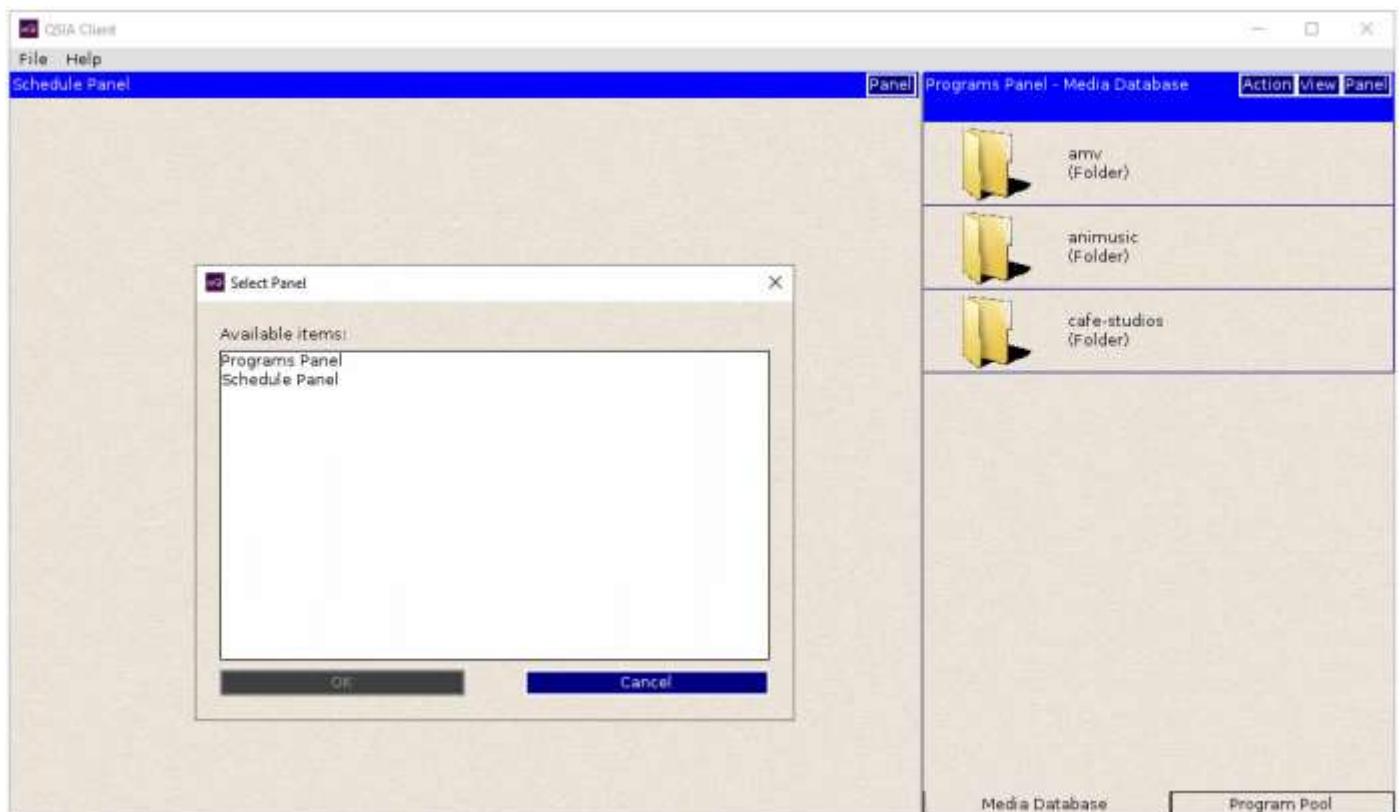
This opens the Resource Browser. In this example, there is one folder at the resource top-level: "KMTV Testing".



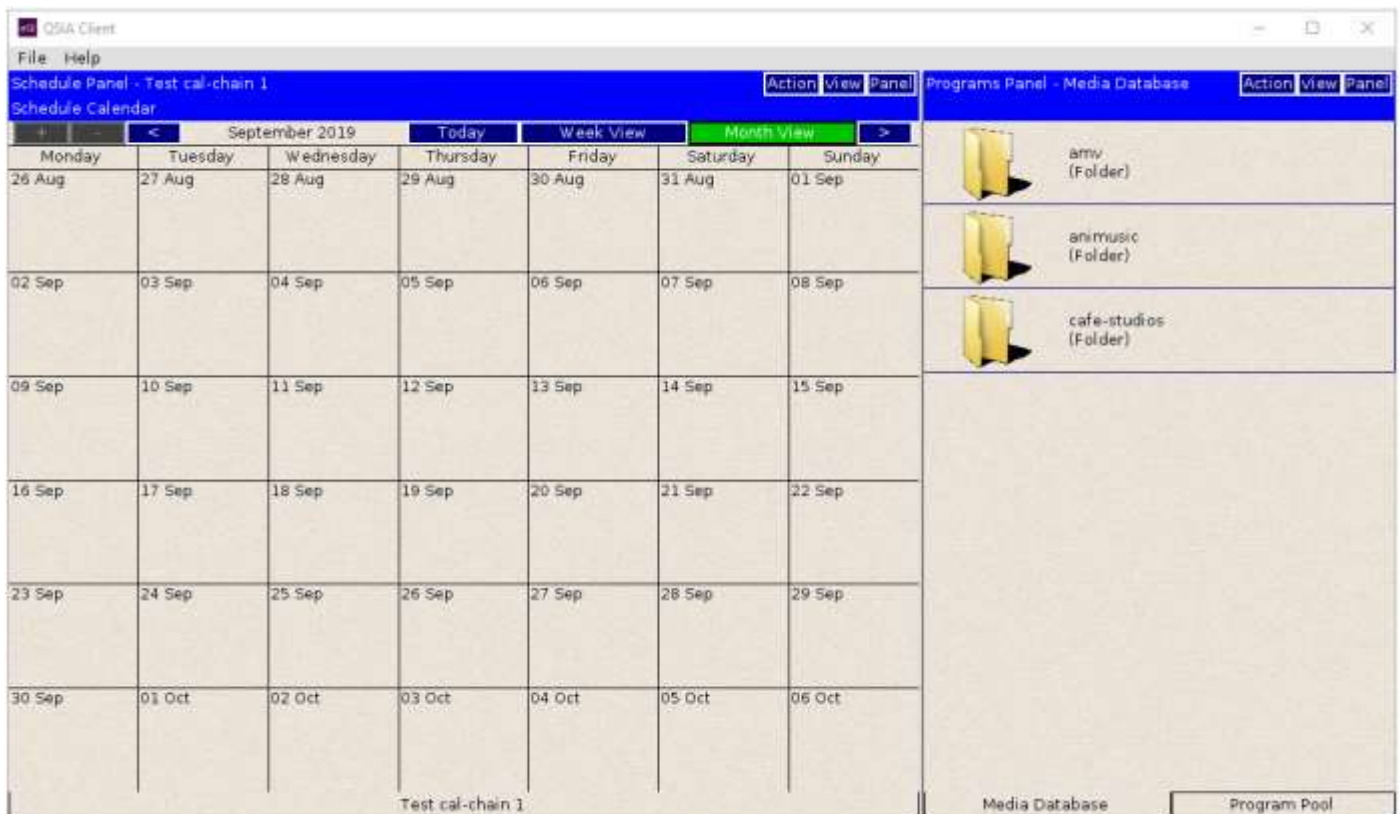
Double-clicking that folder opens it to show the contents, in this case one cal-chain “*Test cal-chain 1*”



Double-clicking that resource opens the ‘Select Panel’ dialogue, which is used to define which Panel the Resource will be opened into. In this case, the list shows the two available panels: ‘Schedule Panel’ and ‘Programs Panel’.



Double-clicking the 'Schedule Panel' item will cause the 'Test cal-chain 1' to be opened there.



In another example, below, the same 'Test cal-chain 1' has been opened within the 'Programs Panel', which already contained two Plugins. As a result, the Panel now has three tabs, at the bottom of the view, which allows the user to switch between the different elements as required.



## 6.2 CLOSING A CALENDAR-CHAIN

A cal-chain can be closed using the 'Close Plugin' option from the 'Panel' button.



This will close the cal-chain resource but leave the other active plugins open within the panel.



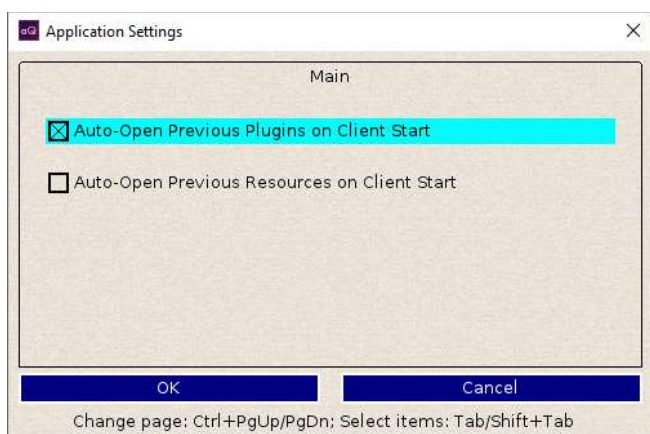
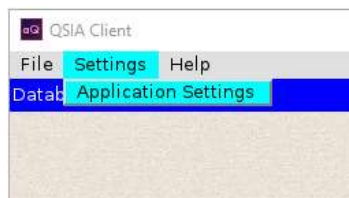


## 7 QSIA CLIENT SETTINGS

The behaviour of the QSIA Client application can be customised in some areas according to user preference.

### 7.1 AUTO-OPEN SETTINGS

The Settings | Application Settings menu option can be used to open the 'Application Settings' dialogue.



The 'auto-open' checkboxes can be used to determine whether previously used Plugins and/or Resources are opened automatically when the Client starts. By default, Plugins are re-opened but Resources are not, but this can be changed to suit user preference.

END OF DOCUMENT